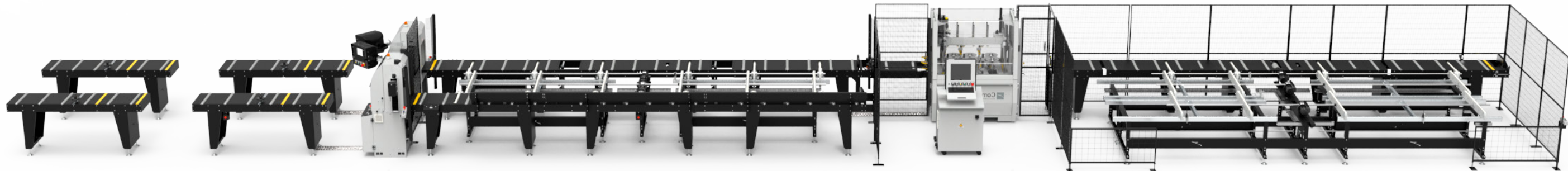


SYSTEMS

TTK 1000



Number of operators: 3

Productivity: 90/110 bars/h

Maximum machinable bar length: 7,5 m



TAB 100 M

Knurling machine:

- 6 motorized axes, programmable from PC
- Measurements: 1680 x 805 x 1790h mm
- Weight: 440 Kg.



TAB 200 FM

Roll-forming machine:

- 13 motorized axes, programmable from PC
- Measurements: 1600 x 1300 x 2175h mm
- Weight: 2500 Kg.

TTK 550



Number of operators: 1/2

Productivity: 40/50 bars/h

Maximum machinable bar length: 7,5 m



TAB 100

Knurling machine:

- 4 independent axes manually set + 2 optional
- Measurements: 1580 x 805 x 1730h mm
- Weight: 370 Kg.



TAB 200

Roll-forming machine:

- manual axis positioning
- Measurements: 1730 x 805 x 1530h mm
- Weight: 750 Kg.

TTK 350



Number of operators: 2

Productivity: 30/40 bars/h

Maximum machinable bar length: 7,5 m

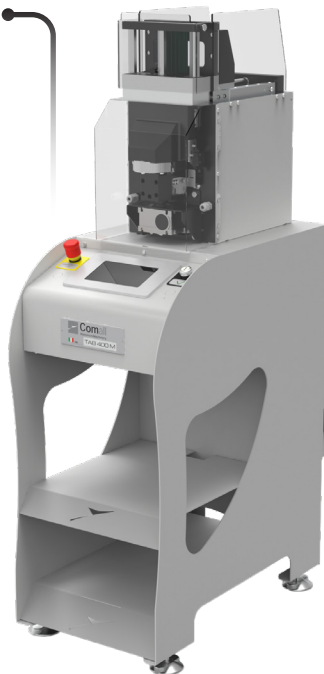
TESTING MACHINES

TAB 400 M CN

Digital machine for **anti-slip tests** with motorized feed of the pressure group.
Measurements: 415 x 787 x 1620 mm

Weight: 180 kg

Controlled feed speed of the pressure group according to EN 14024 standard.



TAB 400

Machine for **anti-slip tests** with pneumatic feed of the pressure group.

Dimensions: 450 x 430 x 1390 mm

Weight: 70 kg

Optional equipment for the Q-test (cross-tension) on 20 mm samples.

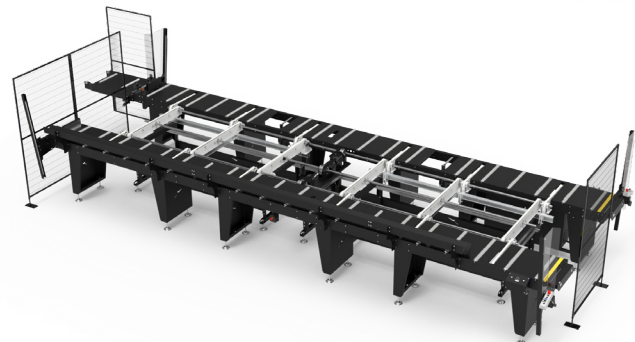
MODULAR STORAGES



Two-stage buffer storage for **automatic unloading** of assembled profiles from the conveyor belt after the assembly machine.
Available in lengths from 6.5 to 7.5 m.

MODULAR CONVEYOR

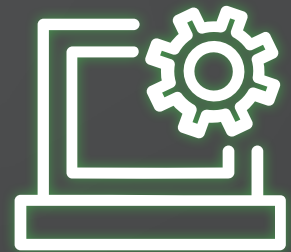
Two-stage displacement for **moving the aluminum shells** from one knurling machine to the next.
Available in lengths of 6.5 and 7.5 m.



ALWAYS BY YOUR SIDE

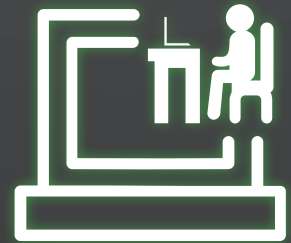
The **remote control** allows the creation of work **programmes and orders remotely**.

Our **technicians** can support customers with **updates** and **customized programmes**.



TTK INTEGRA

MACHINE MANAGEMENT AND PROGRAMMING SOFTWARE.



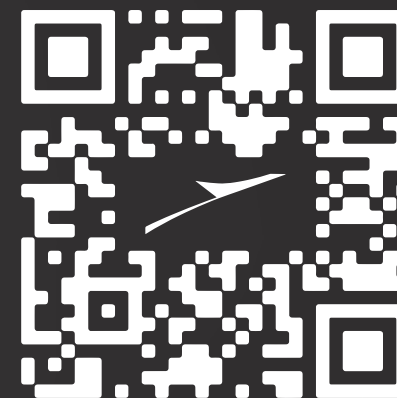
TTK OFFICE

SOFTWARE FOR OFFICE PROGRAMMING.



TTK STATISTIC 4.0

SOFTWARE FOR MONITORING MACHINE ACTIVITIES AND DATA ANALYSIS.



FOLLOW US ON:



COMALL INTERNATIONAL srl
Via Salimbene da Parma 4/C - 42124 Reggio Emilia - Italy
Ph. +39 0522 549 111 - marketing@comall.it
www.comall.it



THERMAL BREAK MACHINES